

MICRO-JET™

MJ250 / MJ251

Specifications	
Body Measurements	(H) 178 mm (7 in) (L) 70.5 mm (2.8 in) (W) 30 mm (1.2 in) Length of Nozzle: 155 mm (6.1 in)
Weight (with butane)	244g
Fuel	Butane
Hours of nonstop burning	35 minutes

Packing	
Item	MJ-250/MJ251
Packing (Inner Box/ Carton)	12 / 48
Packaging	Double Blister/ Card
Master Carton (L x W x H cm)	60.3x37x29.7
CU.FT.	2.7'
N.W. (kg)	13.9
G.W. (kg)	15.9



MJ-250
MJ-251

MJ-250 / MJ251
FLEXI-FLAME / FLEXI-TORCH

Piezo Electronic Ignition System
Compliant with CPSC Regulations

Cordless Butane Products At The Leading Edge

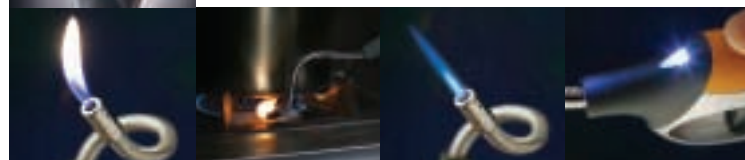
Flexi-Flame Tool Candle Lighter

Applications:

Handy tool for Candles, BBQ, Fireplaces, Camping and anywhere a reliable flame is needed.

Features:

Designed to fit comfortably in your hand and to access hard-to-reach areas EVEN AROUND CORNERS.
Bright LED light locates hard to find wick or pilot in dark environment.
The only flexible lighter to light all your candles, BBQ, fireplace, pilot lights.
Perfect for deep containers like jars and hurricane lamps.
Great for small votive candles, tea lights and containers.
Ideal for hard to reach candles, candelabras and wall sconces.



FLEXI-FLAME / FLEXI-TORCH



MJ-250
MJ-251



FLEXI-FLAME

FLEXI-TORCH

MICRO-JET™ MJ-250 | MJ-251



reddot design award
winner 2006

Our new Flexi-Flame Tool has received the prestigious reddot Design Award for 2006.

It's unique ergonomic design and target seeking LED along with its heavy duty construction are some of the features that set it apart from all others.

Flexi-Flame Tool is available either with flame or torch output. Both are infinitely adjustable and refillable.

Patents Pending
Worldwide

